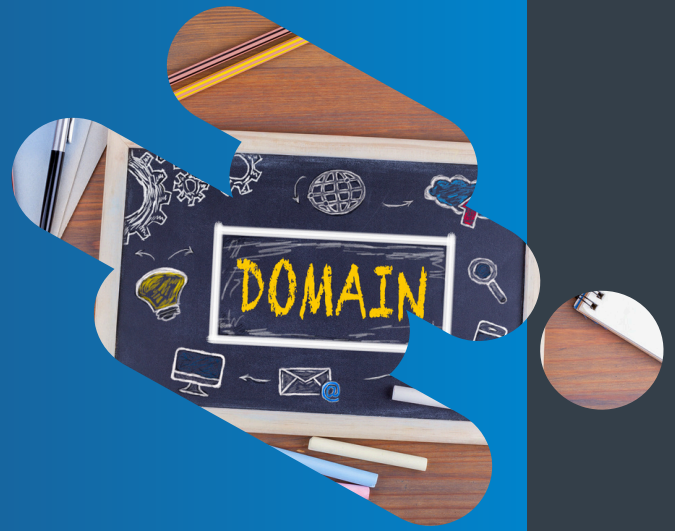


# MERIDIAN LMS MULTI-TENANT (DOMAIN MANAGEMENT)



## MANAGE MULTIPLE BUSINESS UNITS WITH FLEXIBLE DOMAIN CONTROLS AND CENTRALIZED OVERSIGHT



Multi-Tenant (Domain Management) in Meridian LMS provides commercial organizations with the tools to securely and effectively manage and scale their training programs.

This feature supports operational efficiency, flexibility, and cost-effectiveness.

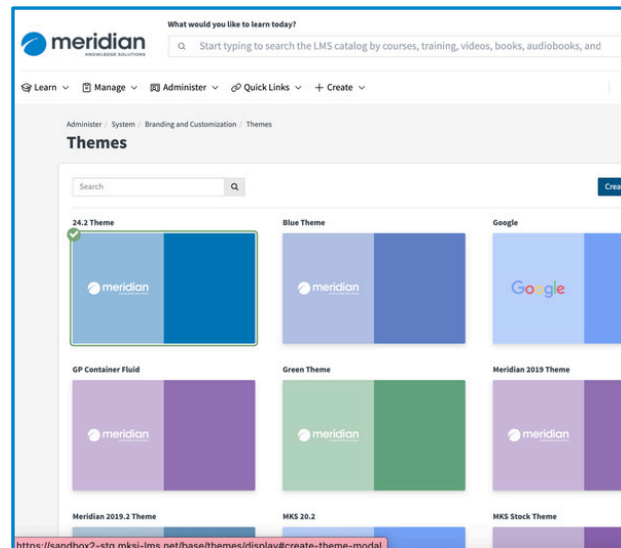
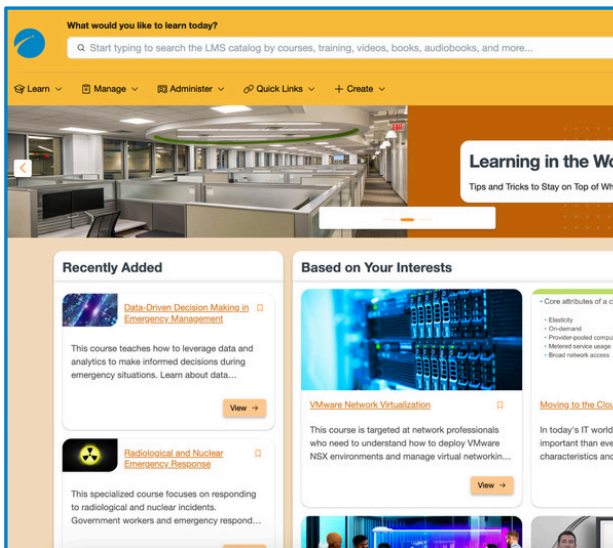
### KEY FEATURES

- Segment users by department, division, partner group, or internal or external
- Customize branding, content, and access per domain
- Restrict visibility across domains
- Assign local admins with limited rights
- Maintain centralized reporting and controls



## IDEAL USE CASES

- Provide training access to partners or franchises
- Segment internal and external users
- Create branded environments per business unit
- Enable different user access methods (SSO v Self-Registration)



## WHY MERIDIAN?

Manage and scale training programs securely and effectively with operational efficiency, flexibility and cost-effectiveness.



Logisnext



Talk to our sales team to see how this feature can help you achieve your goals.