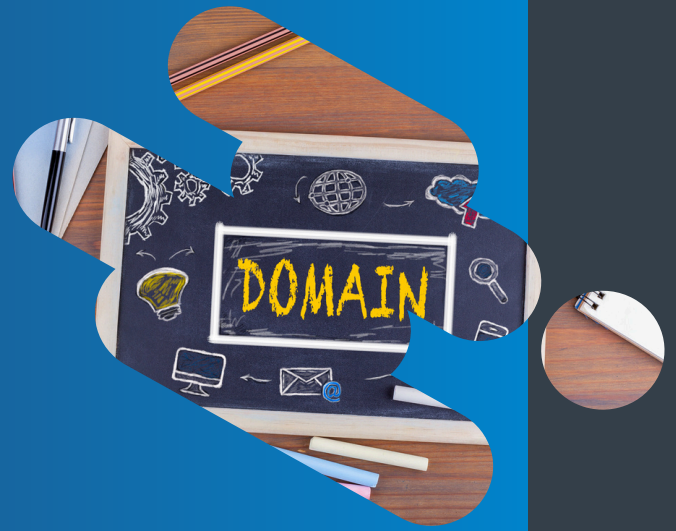


MERIDIAN LMS GOVERNMENT MULTI- TENANT (DOMAIN MANAGEMENT)



SIMPLIFY ADMINISTRATION AND ENSURE SECURE LEARNING MANAGEMENT ACROSS MULTIPLE AGENCIES OR DIVISIONS



Multi-Tenant (Domain Management) in Meridian LMS provides government agencies with the tools to securely and effectively manage and scale their training programs.

This feature supports operational efficiency, flexibility, and cost-effectiveness.

KEY FEATURES

- Segment users by agency, division, or partner group
- Customize branding, content, and access per domain
- Restrict visibility across domains
- Assign local admins with limited rights
- Maintain centralized reporting and controls



IDEAL USE CASES

- Deliver training to multiple state agencies
- Support shared services across jurisdictions
- Provide autonomy to departments while centralizing data



WHY MERIDIAN?

Manage and scale training programs securely and effectively, with operational efficiency, flexibility and cost-effectiveness.



Talk to our sales team to see how this feature can help you achieve your goals.