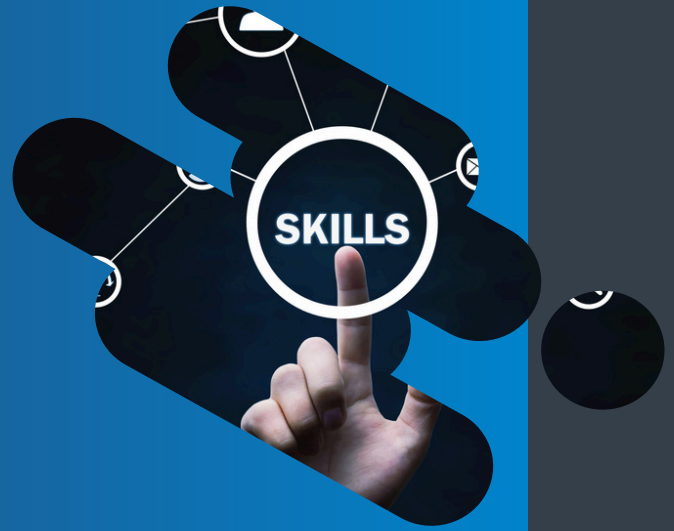
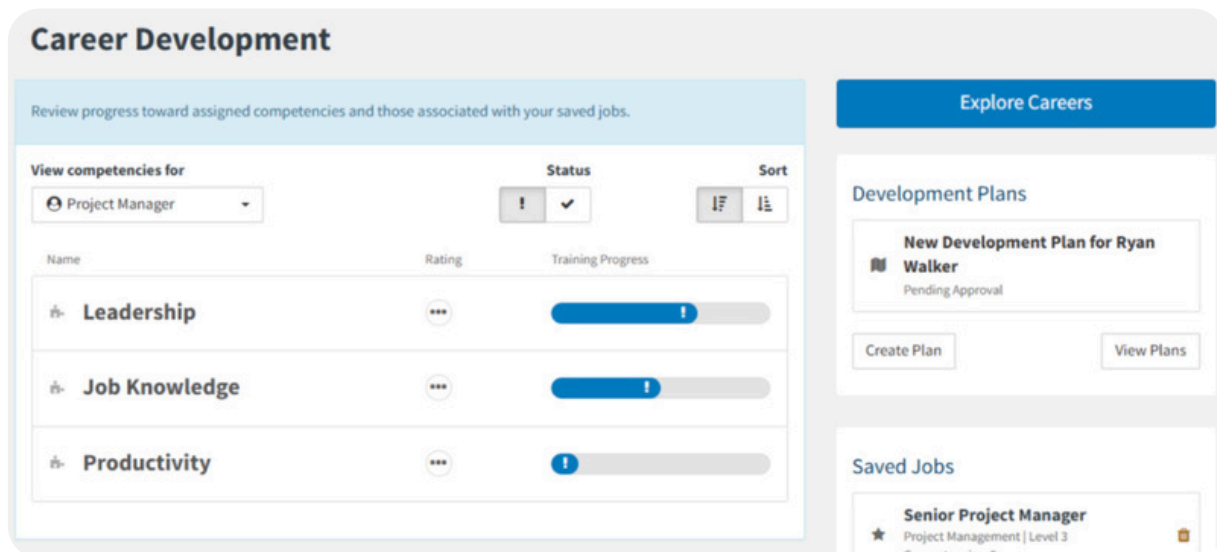


MERIDIAN LMS FOR COMPETENCY & SKILLS TRACKING



IDENTIFY SKILL GAPS AND MEASURE PROGRESS TO DRIVE EMPLOYEE GROWTH AND ORGANIZATIONAL READINESS



Competency & Skills Tracking in Meridian LMS provides commercial organizations with the tools needed to ensure employees have the skills or competencies necessary for now and in the future.

KEY FEATURES

- Map training to core competencies
- Assess skills via quizzes, on-the-job training, or observations
- Generate skill development reports
- Support skill development progression



IDEAL USE CASES

- Align training with business KPIs
- Support professional and personal development programs
- Identify gaps for leadership readiness
- Create development plans and track progress



WHY MERIDIAN?

Aligning training with core competencies ensures employees gain the skills needed for individual and organization success. Regular assessments—through quizzes, on-the-job training, or observations—help track progress and identify development areas. This approach empowers employees to adapt and thrive in a dynamic work environment.



Logisnext



Talk to our sales team to see how this feature can help you achieve your goals.