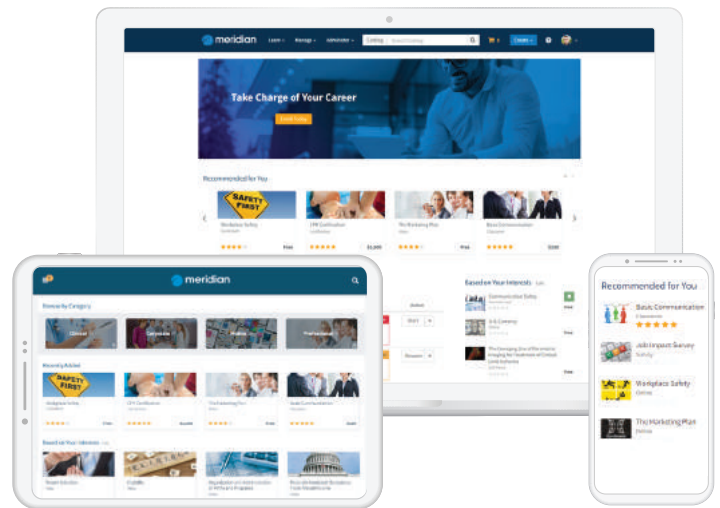


Meridian LMS

Meridian meets the needs of organizations with demanding learning requirements.

Meridian's learning management system has the flexibility to meet your organization's unique needs plus the business challenges and compliance requirements demanded by your industry.

The Meridian LMS allows you to create, catalog, manage, track and report on all learning activities with ease, including online, instructor-led, video-based courses plus SCORM, AICC, and xAPI compliant eLearning.





Key Features

Personalization

Learners receive relevant content recommendations based upon who they are and their selected areas of interest.

Mobile learning

Meridian Mobile allows courses and mobile-friendly materials to be used anytime, anywhere, even offline. Managers, instructors and admins can edit and process approvals on-the-go.

eLearning authoring

The dominKnow | ONE Responsive eLearning Authoring System is included with the Meridian LMS. The integration allows content authors to collaborate and create engaging learning content.

Modern user interface (UI)

Deliver a personalized, consumer-grade learning experience via an easy to navigate user interface that learners will love.

Branding

Make the system your own! Personalize Meridian LMS with your corporate identity. Embed your branding, color scheme, custom URLs and domains to create a distinct, tailored experience for different learner audiences.

eCommerce

Monetize new or existing training programs via our secure ecommerce features. Meridian LMS simplifies complex pricing schedules, tax calculations and discount codes and works with multiple payment gateways.

Cloud or on-premise

Meridian offers secure SaaS and on-premise deployment options to customize and configure the solution to best meet your organization's needs.

eSignature and auditing

Meet demanding compliance and regulatory demands (i.e. 21 CFR Part 11) via eSignature. Ensure training record integrity via our highly configurable audit and reporting capabilities.

Surveys, exams and assessments

Track workforce readiness with pre- and post-surveys with advanced branching, exams and assessments. Measure learner competencies, improve learning outcomes and ensure that training compliance requirements are met.

OpenSesame integration

Meridian's seamless integration with OpenSesame simplifies the procurement process and delivers courses that are quickly and easily deployed and managed.

Learning record store

The Meridian LRS (learning record store) manages learning experiences happening outside the LMS via xAPI standards. Track learning from formats like gaming, MP4, YouTube videos and virtual reality (VR) platforms.



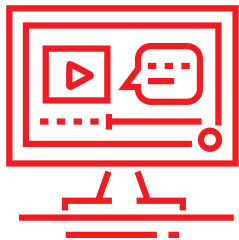
Career Development

Improve employee engagement and retention. Meridian LMS Career Development defines paths for learners to explore to plan their next role and advance professionally. We also integrate with performance systems to deliver gap analysis and drive development plans.



Compliance

A robust LMS helps organizations manage changing compliance requirements and regulatory updates. The Meridian LMS has a dynamic rules-based learning assignment engine to manage training requirements. Electronic records are updated continually for proactive compliance reporting.



Extended Enterprise

Provide customized learning experiences for customers, partners and members. If you do not extend training beyond staff to your organization's entire ecosystem, you are missing the opportunity to drive business performance, improve service levels and boost customer satisfaction.